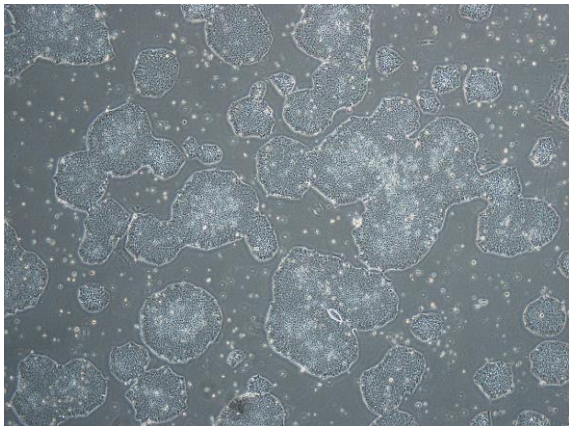
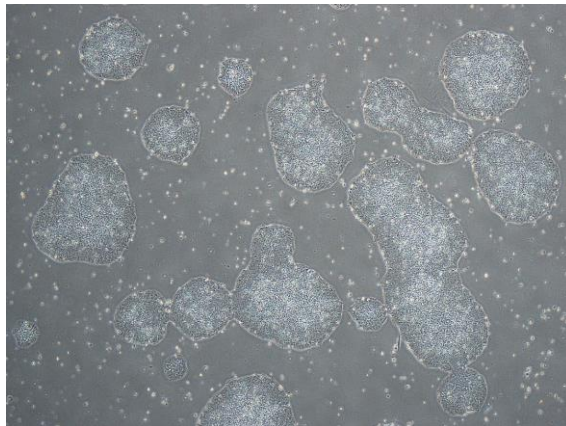


【 CiRA-j-1050 】 Morphology of iPSC colonies

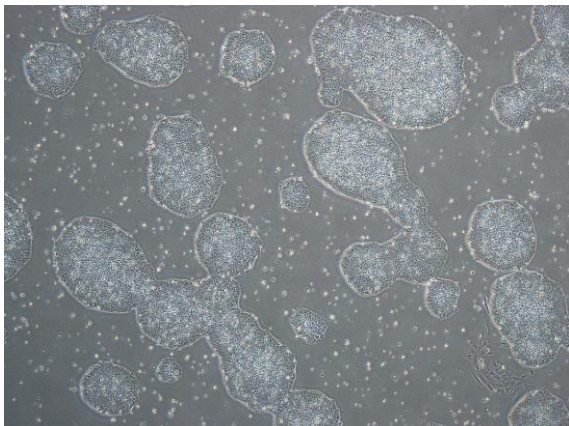
CiRA-j-1050-A: passage-2



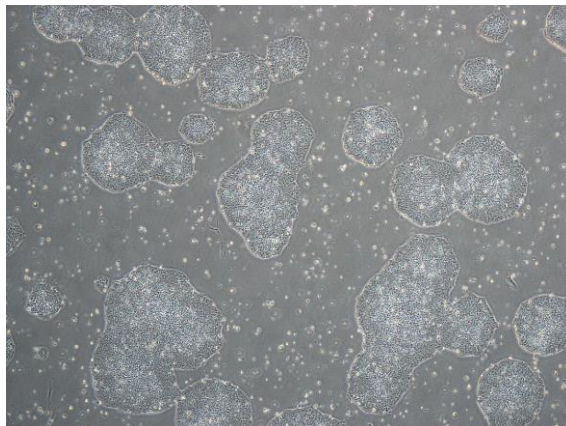
CiRA-j-1050-B: passage-2



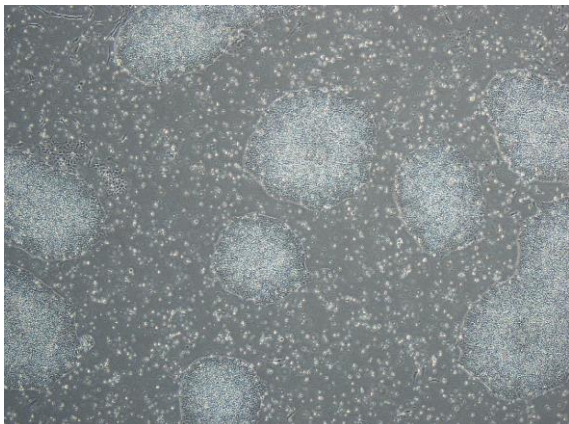
CiRA-j-1050-C: passage-2



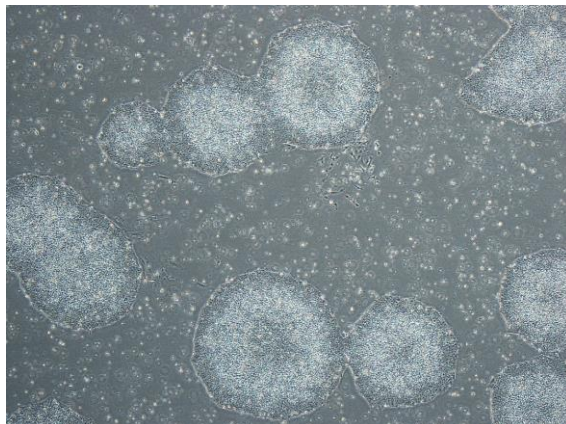
CiRA-j-1050-D: passage-2



CiRA-j-1050-E: passage-2



CiRA-j-1050-F: passage-2



(All images were captured at 4x magnification)